

From Preschool (CPSE) to Kindergarten (CSE)

Understanding the Special Education
Transition Process





What will happen at the next meeting?

- It will be the last CPSE Annual Review.
- When does CPSE end and CSE begin?
- You will attend your child's first CSE meeting.
- Who are the participants at my meeting?
- What does the CSE know about my child?

Eligibility

- CPSE: Preschool Child with a Disability/a significant delay in one of the five developmental delays
- CSE: The 13 classification categories/ a significant deficit that has significant educational impact

Classification

- Autism
- Deafness
- Deaf-blindness
- Emotional Disturbance
- Hearing Impairment
- Learning Disability
- Intellectual Disability
- Visual Impairment
- Multiple Disabilities
- Orthopedic Impairment
- Other Health Impaired
- Speech or Language Impairment
- Traumatic Brain Injury

What support services are available for my child if they are not classified with an education disability?



MTSS



Support

MTSS (encompassing RTI)

Consultation from building level service providers



AIS Support
Occupational Therapy
Physical Therapy
Speech/Language Therapist
Behavioral Consultant
Reading Teacher
Math Specialist
ENL Teacher



Continuum of Special Education Supports



Related
Service

CT

Resource
Room

ICT

Special Class
12:1+1

Special Class
8:1+4

Out of
District
Placement





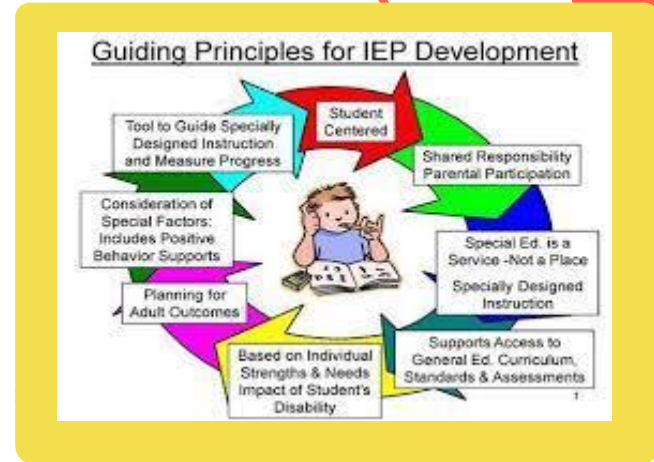
Creating the IEP

Who creates the IEP?

Who writes the goals?

When do I get my IEP?

Who in the school has access to my child's IEP?



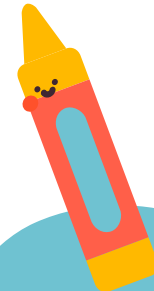
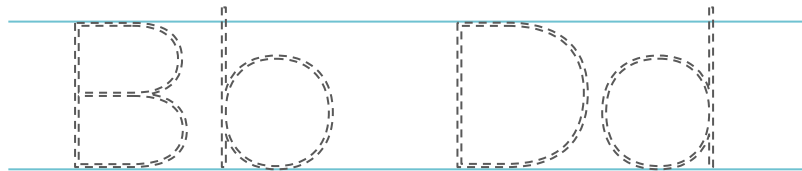
Least Restrictive Environment



POB is responsible for providing an appropriate education for each student



Services must be provided in the least restrictive environment (LRE)



The Role of the Parent/Guardian

- Parents are considered important members of the CSE
- Help prepare the IEP
- Communicate
- Observe, Listen, Advocate
- Review IEP
- Monitor
- Join SEPTA



CSE Meetings

1

Requested Review

To discuss current plan

2

Annual Review

To develop plan for next year

3

Re-Evaluation

Every 3 years re-evaluations



**May be
requested by
parent or team
member**

Who is my contact person?

Teacher(s)

Related Service Providers

School Psychologist

Principal or Assistant Principal

CPSE Chairperson

Sarah Schuldenfrei

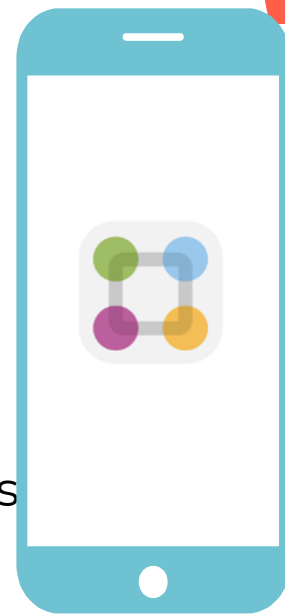
Assistant Director of Pupil Personnel Services

Betsy Lashin

Executive Director of Special Education

Monica Manzi

PPS: 516-434-3020



Thank you!



**EVERY STUDENT MATTERS
EVERY MOMENT
COUNTS**